

Personal Radiation Dose Management System User Manual

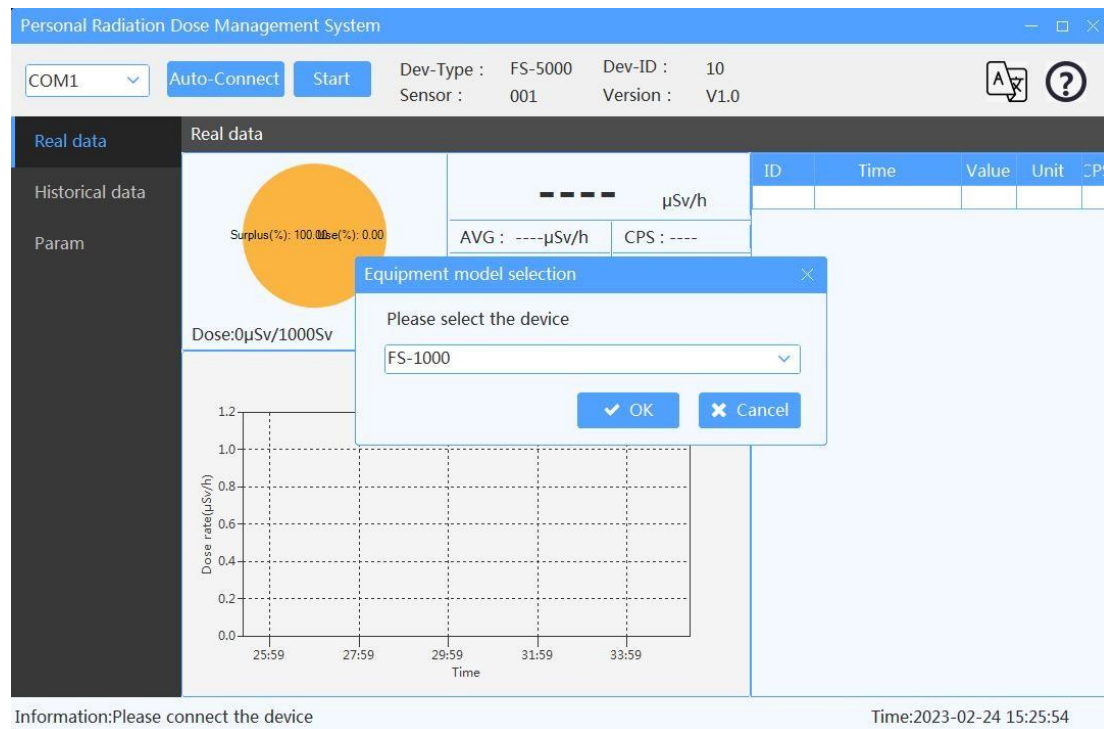
Henan Bosean Electronic Technology Co.,Ltd.

2023-02

Before using the software, please ensure that the device driver installation is successful.

1. Automatic device identification

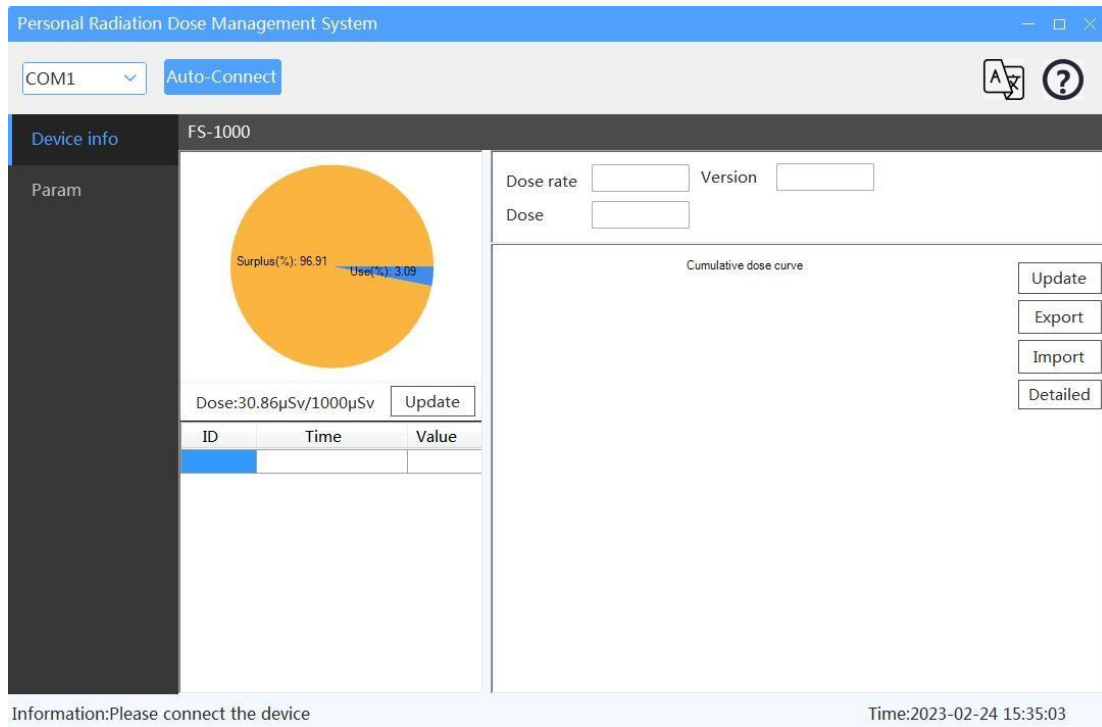
First select the device model FS-1000



Click the Update button to read the number of COM; Click the Auto-Connect button to connect the device automatically.

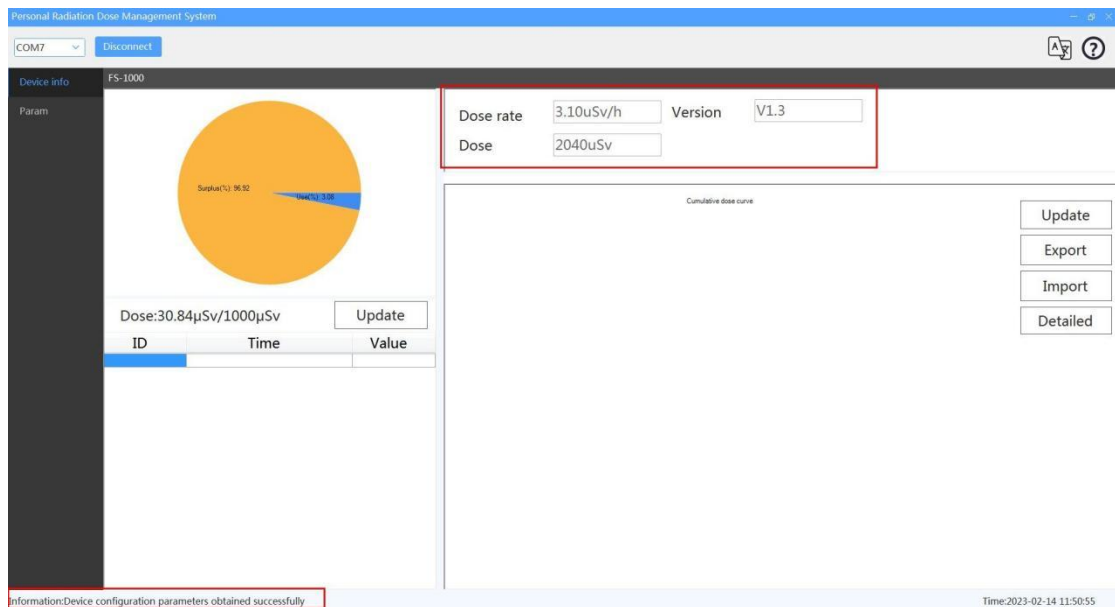
1.1 Update Connection

Click the "Auto-Connect" button, then the COM number will appear in the device connection.



1.2 Automatic Identification

Click the "Auto-Connect" button, the device will be connected automatically and show the corresponding prompt.



2. Parameter setting

This function is mainly to set equipment parameters, including equipment time calibration, setting calibration coefficients, setting dose rate thresholds, setting dose

thresholds, obtaining equipment configuration parameters, switching between Chinese and English, etc.

Click the "Param" menu, parameter configuration option, open the configuration interface.

The screenshot displays the 'Personal Radiation Dose Management System' window. At the top, there is a blue title bar with standard window controls. Below it, a grey bar contains a dropdown menu set to 'COM7', a 'Disconnect' button, and icons for a keyboard and help. The main interface has a dark sidebar on the left with 'Device info' and 'Param' options; 'Param' is currently selected. The central area is titled 'Param' and contains four rows of configuration fields: 'Coefficient(%)' with a value of 100, 'Dose rate' with a value of 3.10 and a unit dropdown set to 'uSv/h', 'Dose' with a value of 2040 and a unit dropdown set to 'uSv', and 'Dose total(μSv)' with a value of 1000. Each row has a 'Set' button to its right. Below these fields are two buttons: 'Update device info' and 'Update device time'. At the bottom left, a status bar reads 'Information:Please connect the device', and at the bottom right, it shows the time 'Time:2023-02-24 15:35:31'.

Param	
Coefficient(%)	100
Dose rate	3.10 uSv/h
Dose	2040 uSv
Dose total(μSv)	1000

Buttons: Set, Set, Set, Set, Update device info, Update device time

Information:Please connect the device Time:2023-02-24 15:35:31

2.1 Time Calibration

Click the "Update device time" button to set the system time of the device and update the time to the computer system time.

Personal Radiation Dose Management System

COM7 Disconnect

Device info Param

Param

Coefficient(%) 100 Set

Dose rate 3.10 uSv/h Set

Dose 2040 uSv Set

Dose total(μSv) 1000 Set

Update device info

Update device time

Information:Time calibration successful

Time:2023-02-24 15:35:49

2.2 Set the calibration factor

The coefficient setting needs to contact the after-sales personnel, Set after confirmation.

Personal Radiation Dose Management System

COM7 Disconnect

Device info Param

Param

Coefficient(%) 100 Set

Dose rate 3.10 uSv/h Set

Dose 2040 uSv Set

Dose total(μSv) 1000 Set

Update device info

Update device time

Information:Coefficient calibration successful

Time:2023-02-24 15:36:00

2.3 Set dose rate threshold

Fill in the dose rate threshold, which must be 4 digits, including the decimal point, and select the unit, then click the "Set dose rate threshold" button

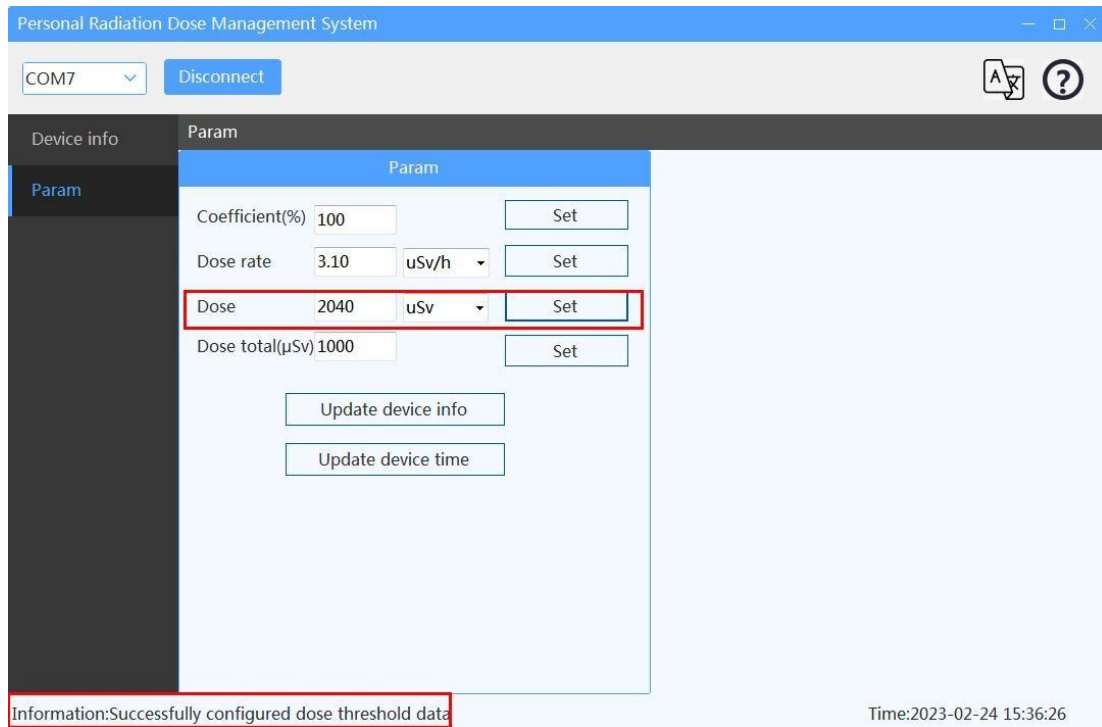
The screenshot shows the 'Personal Radiation Dose Management System' window. At the top, there's a 'COM7' dropdown and a 'Disconnect' button. Below this is a sidebar with 'Device info' and 'Param' tabs. The 'Param' tab is active, showing a table of parameters:

Param			
Coefficient(%)	100		Set
Dose rate	3.10	uSv/h	Set
Dose	2040	uSv	Set
Dose total(μSv)	1000		Set

Below the table are two buttons: 'Update device info' and 'Update device time'. At the bottom, a status bar shows 'information:Successfully configured dose rate threshold data' and 'Time:2023-02-24 15:36:13'.

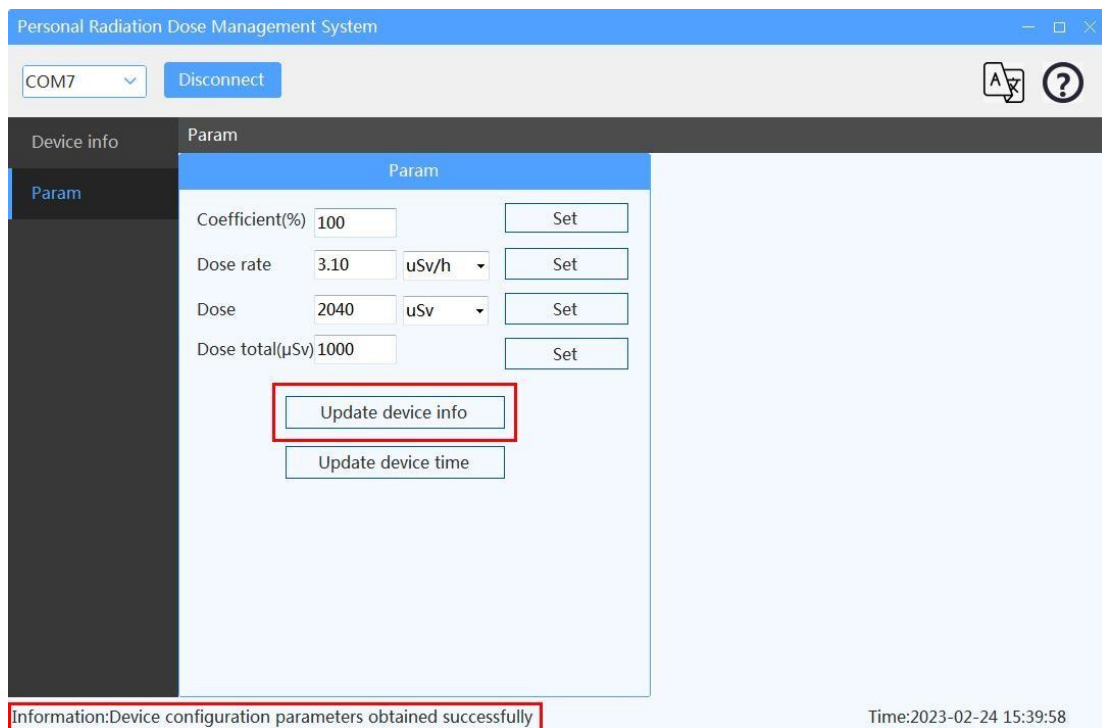
2.4 Set the Threshold Dose(TD)

Fill in the dose threshold, which must be 4 digits, including the decimal point, and select the unit, then click the "Set dose threshold" button



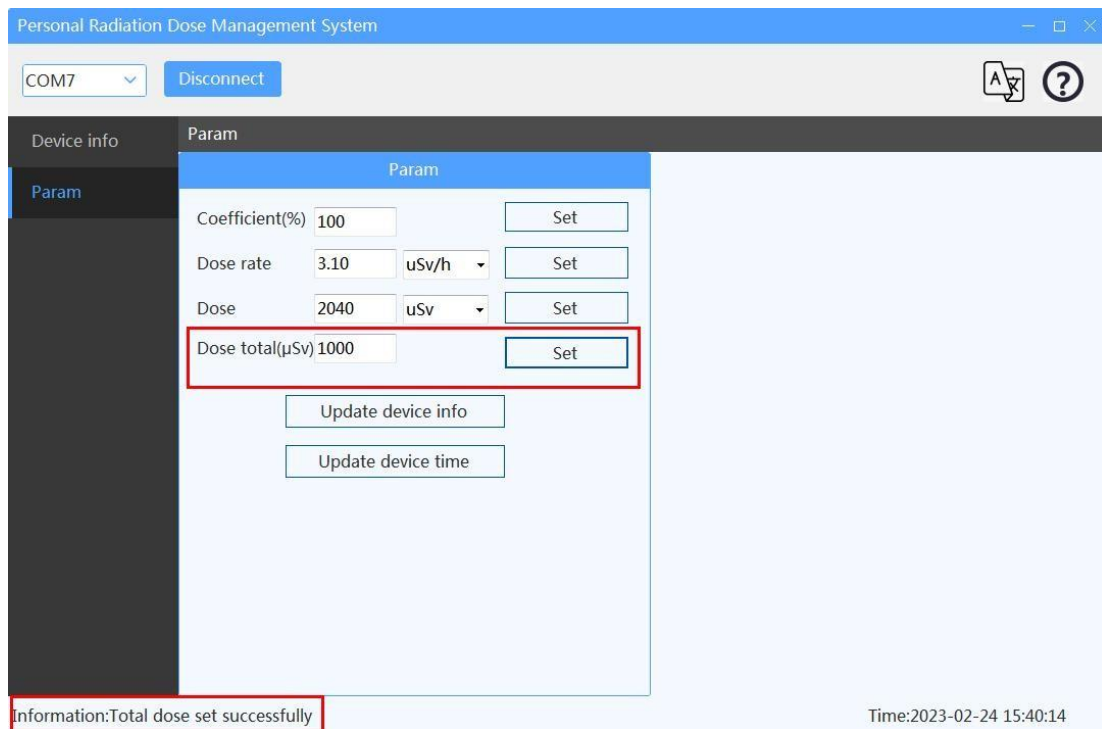
2.5 Get Configuration Parameters

Click the "Update Device Info" button to obtain device parameter information



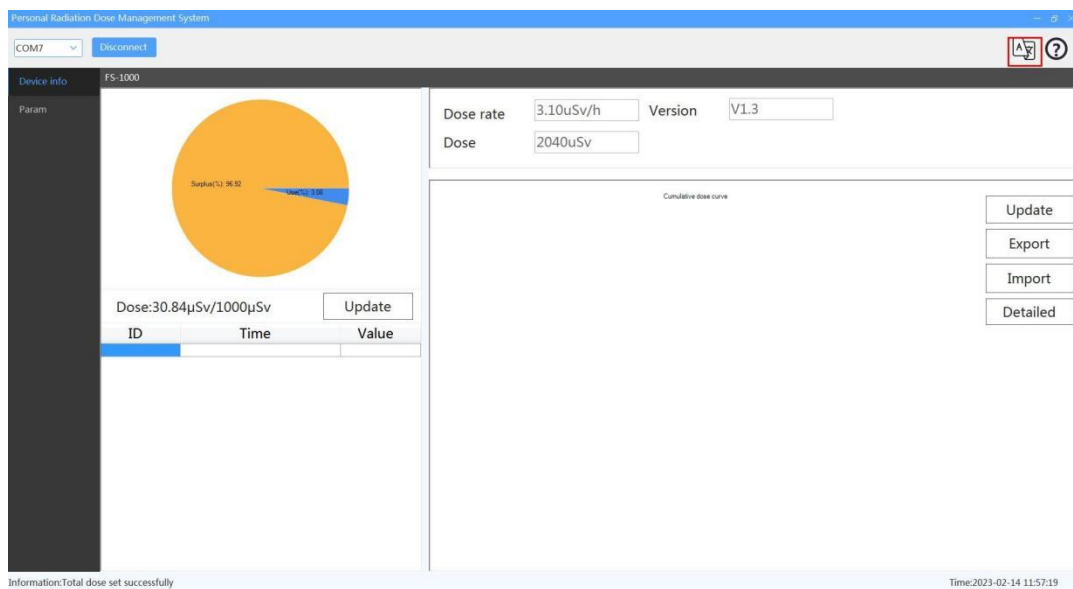
2.6 Set Doses

Set the total dose value, which is used to count the cumulative dose percentage.



2.7 Switch between Chinese and English

Click "Language" button and select language to switch. Currently, only Chinese and English is supported.

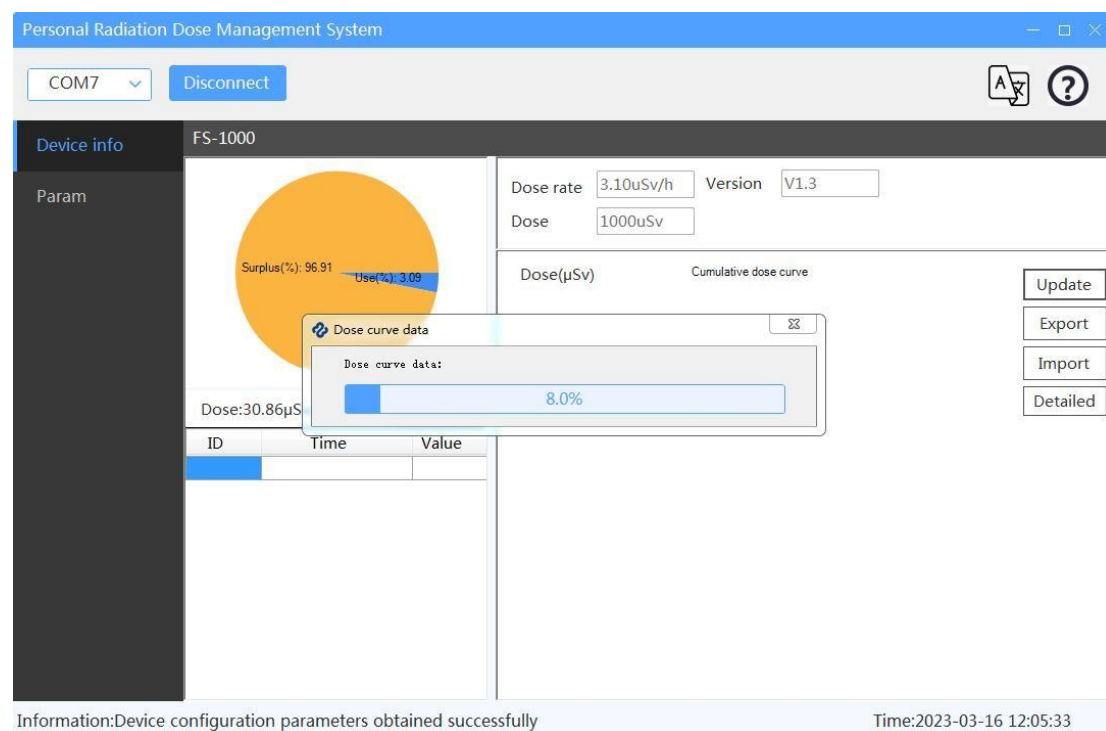


3.historical data reorganization

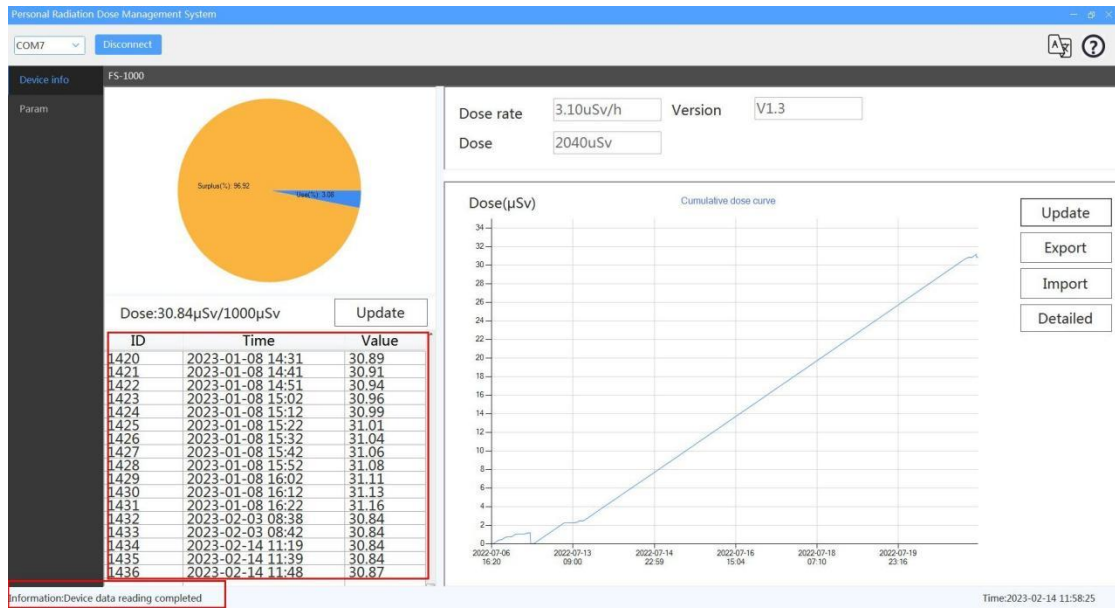
This module mainly deals with historical data processing, including historical data query, historical data curve display, cumulative dose rate data display, data import and export, etc.

3.1 Historical data query

Click the "Update" button to read the historical data of the device. Due to the large amount of data, it will take a while to read.

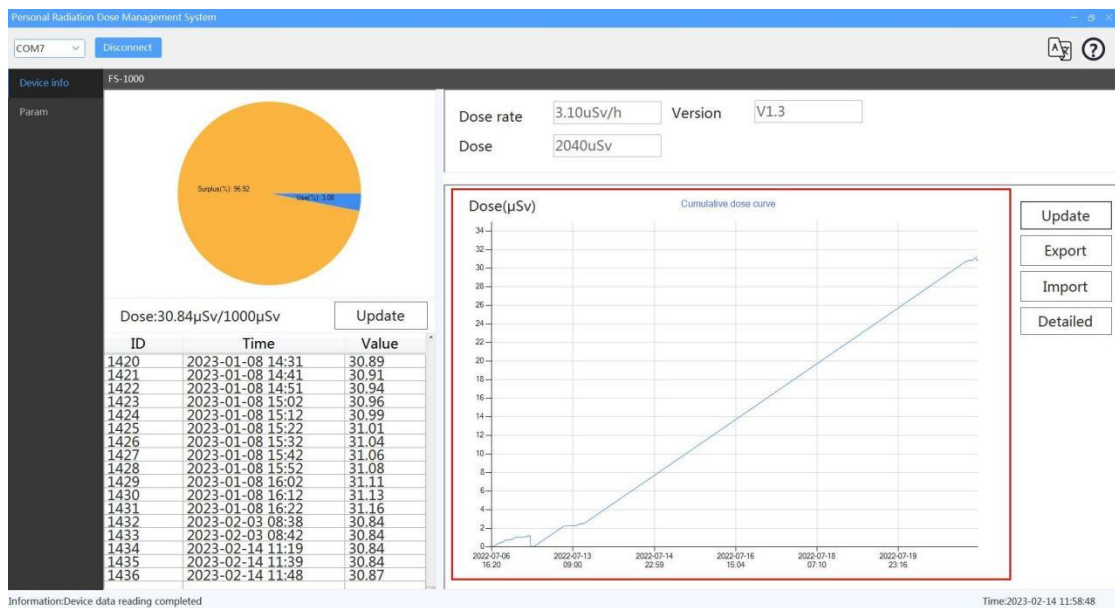


After the data reading is completed, the following form data will be displayed.

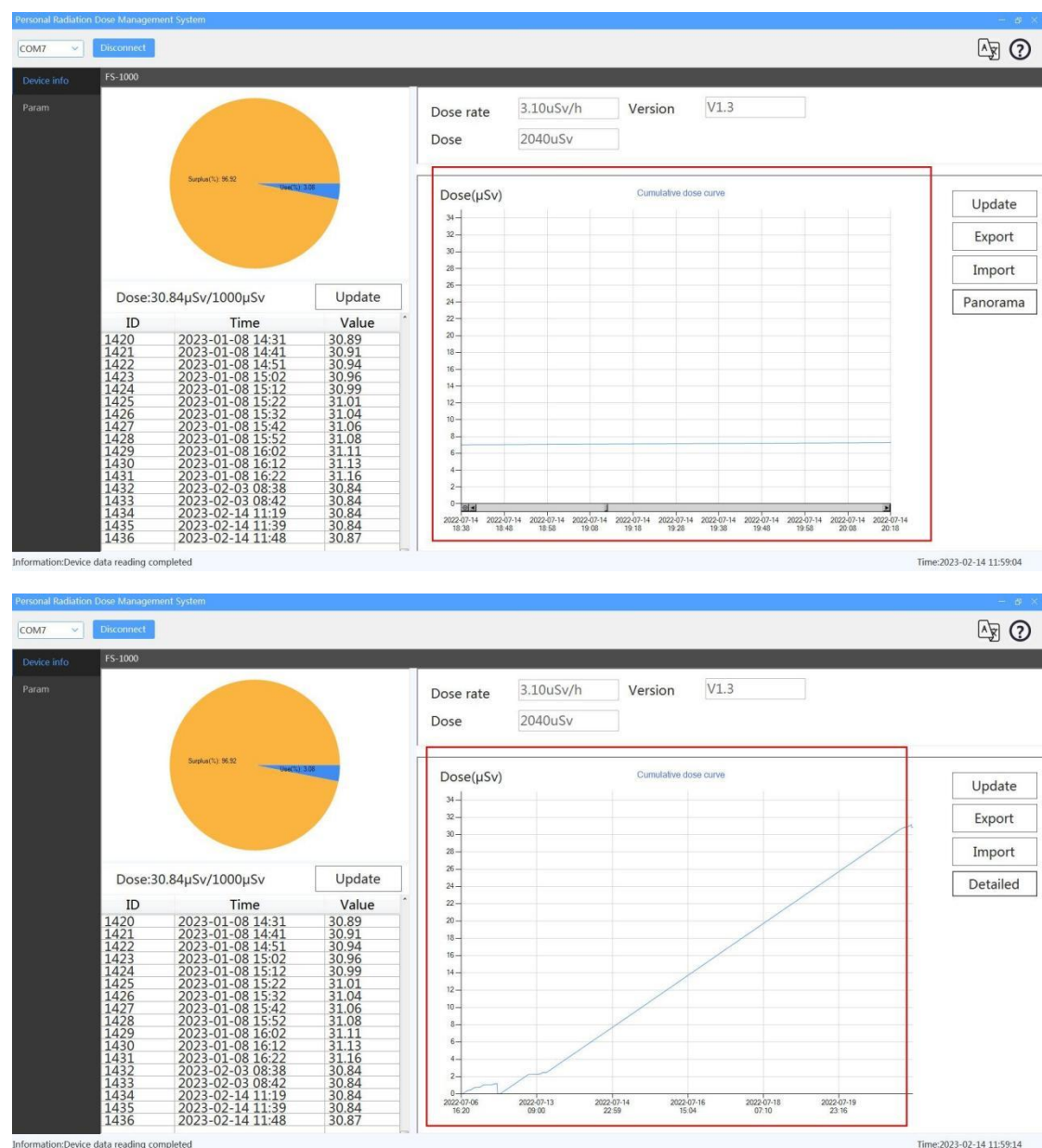


3.2 Historical data curve display

After reading the data,it will be shown as below.

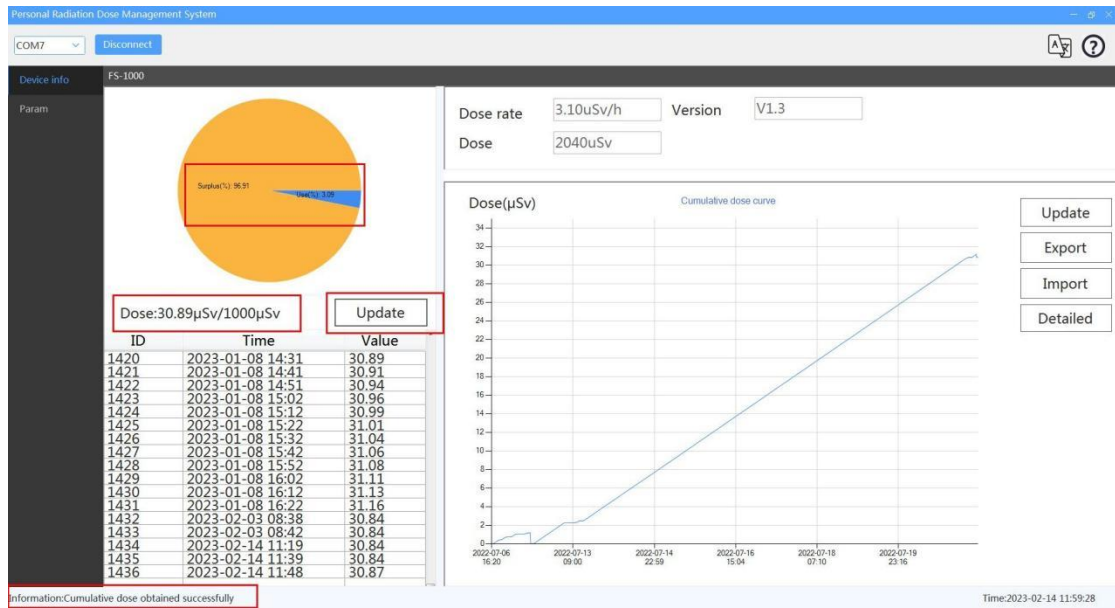


Click detailed or panoramic switch curve display.



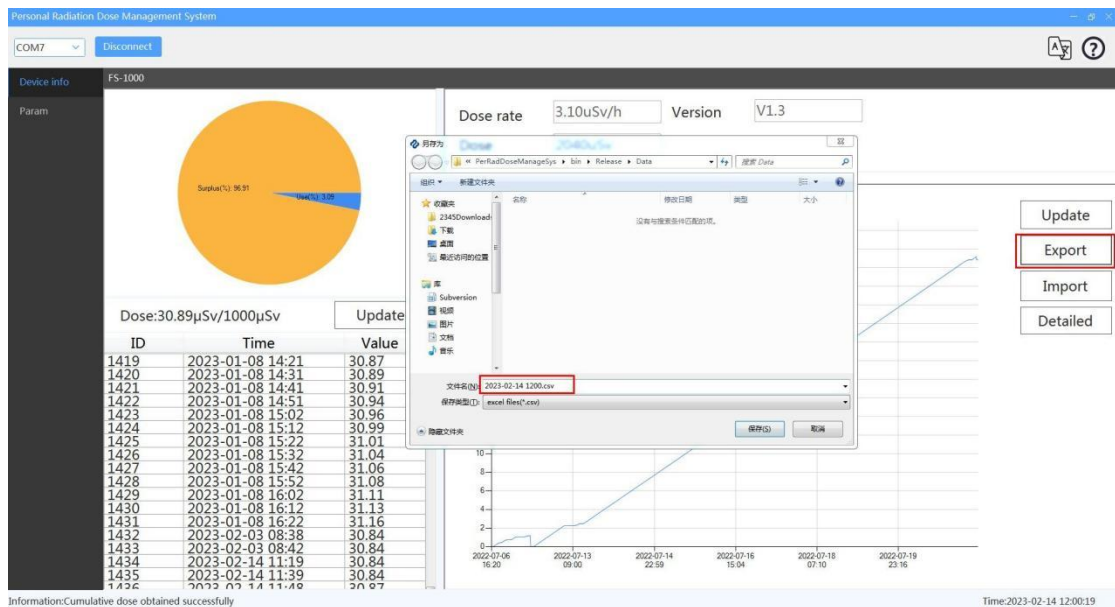
3.3 Cumulative dose rate data display

Click the "Update" button to update the cumulative dose rate data and display it in a pie chart.

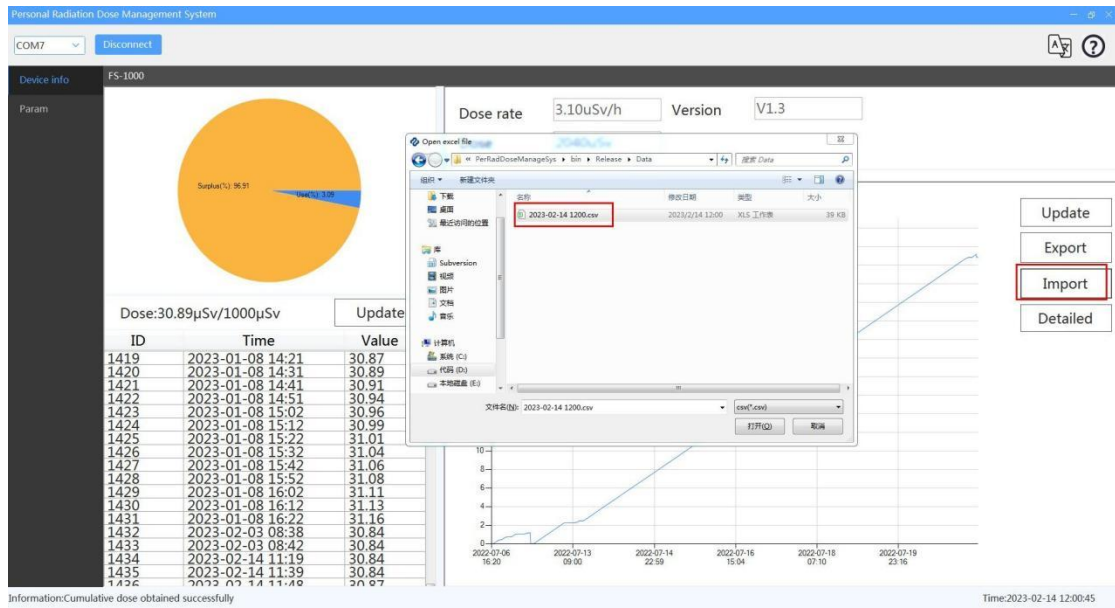


3.4 Data import and export

Click the "Export" button, select the directory in the pop-up box, and define the file name.



You can re-import the exported Excel file data to display in the software.



4. Other operations

4.1 Help documents

In the interface, the button  is help documents and related functions.

Select the model selection and load the interface display of the corresponding model.

Select the help document to open the user manual automatically.

Select the About function to open the About interface. As shown below.

